

Phase One Industrial
Aerial Solutions



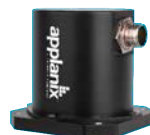
PHASE**ONE**
INDUSTRIAL

A Line of Aerial Cameras and Solutions for Wide Aerial Coverage

We at Phase One Industrial continuously expand our offering and design the exact solutions that meet the requirements of the developing industrial and aerial imaging market. Our solutions specifically address the challenges of imaging data acquisition projects, helping our customers to increase productivity and reduce time and costs. We are proud to add to our line of products the 280MP Large Format Aerial Solution.

280MP

150MP/100MP



iX Capture

iX Flight

iX Plan

Controller

GNSS/IMU

Software



280MP Aerial Solution

The New Standard in Large Format Aerial Imaging

Large area performance, affordable and accessible for use with a wider range of aircraft

With **over 20,000 pixels across**, compact size and weight, the 280MP Aerial Solution provides **higher Return on Investment** compared to any other large format system available on the market.

The 280MP Aerial Solution offers the **highest image capture rate and dynamic range**, increasing overall quality and accuracy of the final photogrammetric products.

The iXM-RS 280F provides a large format option that easily integrates with DSM400 gyrostabilized mount creating a **compact and lightweight** system for use in

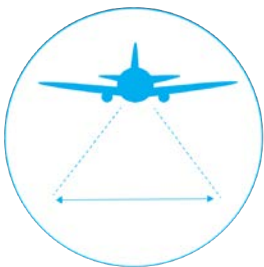
a wide range of aircraft.

The iXM-RS 280F is a dual lens metric camera, with 90mm lenses for capturing RGB information, and providing **superior image quality**. The iXM-RS 280F camera generates central projection image from two 150MP nadir images with equal ground resolution.

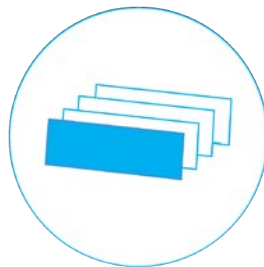
The Aerial solution comprises of iX Controller, GNSS/IMU receiver (POS AV series), Somag gyro-stabilized mount (DSM 400), the Phase One flight planning and management software iX Plan and iX Flight as well iX Capture.

“The iXM-RS 280F provides accuracy and image quality”

- Backside illuminated (BSI) CMOS sensor
- Wide dynamic range
- Improved light sensitivity
- More flying hours per day and more flights achievable per year
- Maintains object resolution in low light conditions



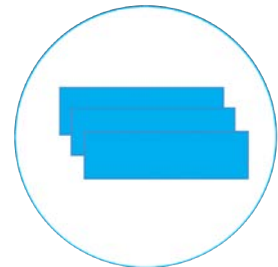
+ 20,000 pixels across



2 frames per second



390 kts Maximal ground speed for 10 cm GSD with motion blur under 1 pixel



97% forward overlap for 10 cm GSD at 150 kts

iXM-RS 280F: Pure Sharpness by Blur Control FMC

The new generation of CMOS sensor eliminates the motion blur thanks to short exposure time, enabled by using high-speed shutters (up to 1/2500 sec) and higher sensitivity pixel design. Combined with RS shutter technology, the camera provides highly sharp images overcoming cameras with other FMC capabilities.



Flying Height and Swath Width

GSD (cm)	Altitude (m)	Altitude (ft)	Swath (m)
3	718	2,356	605
5	1,197	3,926	1,008
10	2,394	7,853	2,015
15	3,590	11,779	3,023
20	4,787	15,706	4,030
25	5,984	19,632	5,038
30	7,181	23,559	6,045
33	7,899	25,915	6,650
35	8,378	27,485	7,053
40	9,574	31,412	8,060
45	10,771	35,338	9,068

4-Band Configuration 280MP Aerial Solution

Phase One is expanding the **camera's performance**, offering additional configuration for simultaneous capturing **RGB and NIR images**. The 280MP 4-Band solution comprises dual 90 mm lenses for capturing RGB information, and a 50 mm lens for capturing NIR information and thus providing 4-Band (R,G,B,NIR) or CIR imagery.

The integrated **iX Capture software** automatically generates distortion-free 4-Band images by performing an **accurate matching of NIR image to an RGB image**, creating precise and reliable output data.

iX Capture outputs:

- TIFF and JPG formats
- 4-Band RGB+NIR (RGBN)
- 3-Band CIR (Color Infra Red)
- NDVI (Normalized Difference Vegetation Index)
- Distortion-free / corrected RGB
- Distortion-free / corrected NIR

“Expanding the camera performance with many configurations”



An aerial photograph showing a dense forest of green trees and shrubs. The forest is surrounded by a body of water that appears brownish-green. The image is taken from a high angle, looking down on the landscape. A white text box is overlaid on the upper right portion of the image.

RGB image taken with Phase One Solution

An aerial photograph showing the same forest and water as the RGB image above. In this image, the vegetation is rendered in shades of red and pink, while the water is a deep teal or cyan color. This is a false-color representation used for remote sensing. A white text box is overlaid on the lower left portion of the image.

CIR image taken with Phase One Solution

Technical Specifications

	iXM-RS 280F 4-Band	iXM-RS 280F
Frame geometry	Central projection	
Resolution	284MP 20150 x 14118	
Image formats	PhaseOne RAW, IIQ-L, IIQ-S	
Output formats	Distortion Free RGB, NIR, CIR, RGBN, NVDI in TIFF 8 and 16 Bit or JPEG	Distortion Free RGB in TIFF 8 and 16 Bit or JPEG
RGB/NIR ratio	1:1.8	N/A
Frame width for 10 cm GSD (m)	2015	
Frame height for 10 cm GSD (m)	1412	
Frame area for 10 cm GSD (sq.km)	2.84	
Typical image size (MB) for TIFF (8 Bit)	1100	833

Lenses type	Rodenstock	
Number of lenses	3	2
Focal length (mm)	90 & 50	90
FOV - across flight (°)	45.7	
FOV - along flight (°)	32.9	
Aperture range	f/5.6 - 11	
Exposure principle	Leaf shutter	
Shutter speed (sec)	Up to 1/2000	
Capture rate (fps)	2	
Light sensitivity (ISO)	50-6400	
Dynamic range (dB)	83	
NIR range (nm)	720 - 1000	N/A
Events synchronization speed (µsec)	100	

Sensor Specifications

Sensor type	CMOS	
Sensor number	3	2
Pixel size (µm)	3.76	
Array (pixel)	14204 x 10652	
Analog-to-digital-conversion (bit)	14	



	iXM-RS 280F 4-Band	iXM-RS 280F
Flight Specifications		
Maximal ground speed for 10 cm GSD with motion blur under 1 pixel (knot)	390	
Maximal forward overlap for 10 cm GSD at 150 knot (%)	97	
Maximal orthophoto angle for 20% side overlap (°)	37	
Flight altitude for 10cm GSD (Feet)	7853	
Operating Conditions		
Power input (V DC)	12-30	
Maximal power consumption (W) - camera only	48	32
Humidity - non-condensing (%)	15 to 80	
Temperature (°C)	-10 to 40	
Approvals	FCC (Class A), CE, RoHS	
System Specifications		
System weight (kg/Lb)	32.5 / 72	31 / 68.5
System size (mm/In)	460 x 430 x 440 / 18.1 x 16.9 x 17.3	
Pilot monitor for navigation (In)	7	
Operator monitor for camera management (In)	15	
Gyro-stabilizer SOMAG	DSM400	
GNSS / IMU Applanix	POS AVX 210 / POS AV Series	
Power consumption	6 Amp at 28V	
iX Controller MK4		
Interfaces	USB3, Power and Control Ports for Camera, GNSS and Mount	
Storage capacity (TB)	1.0	
Storage type	SSD	
Storage exchangeability	Yes	



Phase One 150MP/100MP Aerial Solutions

Phase One 150MP and 100MP Aerial Solutions are **fully integrated systems** based on the iXM-RS150F and the iXM-RS100F high-resolution metric cameras respectively. Each Aerial solution includes the camera and additional components, such as: the iX Controller, Somag stabilizer, Applanix GPS/ IMU unit and the Phase One flight planning and management software iX Plan and iX Flight as well iX Capture.



- Fully integrated Phase One Aerial Solution
- Large image coverage
- Exceptional accuracy and image quality
- Optional 4-Band Aerial Solution with dual frame sensors for RGB and NIR imaging
- Light weight & Low power

iXM-RS150F Camera

Equipped with a **full frame sensor** (14204 x 10652), and a **3.76-micrometer pixel size** that enables higher ground resolution from a higher flight altitude and provides a larger aerial coverage resulting in higher aerial survey productivity.

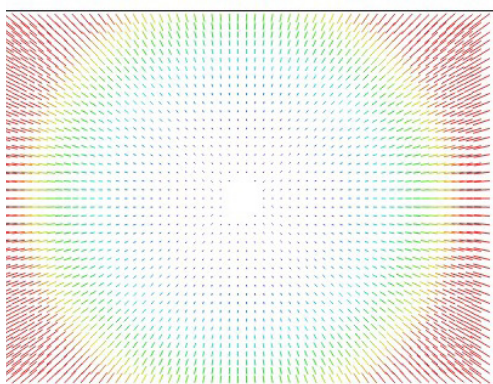
The camera comes with one of **eight RS lenses** ranging from 32mm to 180mm focal length, and the 300mm **RSM lens**, all equipped with a **central leaf shutter** to ensure geometrically correct aerial image.

Designed and built for aerial photography by Rodenstock and Schneider Kreuznach, the lenses are factory **calibrated for infinity focus** and equipped with a central leaf shutter speed up to 1/2500 sec. It offers high capture speed of 2 fps for an array of flight conditions. The RS lenses opening angle is specially fitted for oblique and lidar systems.

- BSI CMOS sensor
- High dynamic range of 83 dB
- Fast image capture rate of 2 frames per second
- Recommended for high quality 3D city models

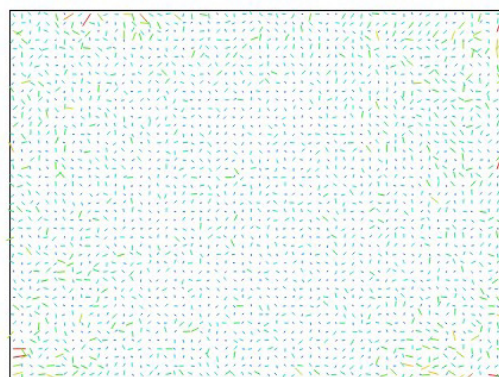
“The iXM-RS150F is a highly productive 150-megapixel aerial survey camera”

Camera Distortion Model



Distorted Image

200 pix



Undistorted Image

1 pix



1. The distortion model of the camera corresponds to a standard Brown-Conrady symmetric radial distortion model.
2. Images captured with the camera may be easily transformed to an undistorted image with a maximal residual of less than 1 μm .

4-Band Solution 150MP/100MP Aerial Solution

The four-band solution comprising the RGB and Achromatic camera models, in which images are captured in RGB and NIR bands simultaneously, and then processed automatically to generate distortion-free images and perform fine co-registration of the pixels from NIR to the RGB images. The 4-Band solution includes two synchronized cameras (RGB and NIR) in addition to the iX Controller, Somag gyro stabilized mount, Applanix GNSS/IMU receiver (POS AV series) and the Phase One flight planning and management software iX Plan and iX Flight as well as iX Capture software to control camera during flight.

iX Capture software is also used to generate distortion-free images and to perform accurate matching of the NIR image to the RGB image.

iX Capture Outputs:

- 4-Band combined NIR and RGB (RGBN)
- 3- Band (CIR) combined NIR and RGB (NRG)
- NDVI (Normalized Difference Vegetation Index)
- Original and distortion-free RGB & NIR images

“Extremely useful for remote sensing and mapping applications in agriculture, forestry and environment monitoring”

Technical Specifications

	iXM-RS150F 4-Band	iXM-RS150F
Frame geometry	Central projection	
Resolution	150MP 14204 x 10652	
Image formats	PhaseOne RAW IIQ-L, IIQ-S	
Output formats	Distortion Free RGB, NIR, CIR, RGBN, NVDI in TIFF 8 and 16 Bit or JPEG	Distortion Free RGB in TIFF 8 and 16 Bit or JPEG
RGB/NIR ratio	1:1	N/A
Frame width for 10 cm GSD (m)	1420	
Frame height for 10 cm GSD (m)	1065	
Frame area for 10 cm GSD (sq.km)	1.51	
Typical image size (MB) for TIFF (8 Bit)	600	450

Lenses type	Rodenstock / Schneider-Kreuznach							
Number of lenses	2				1			
Focal length (mm)	32	40	50	70	90	110	150	180
FOV - across flight (°)	79.7	67.5	56.2	41.8	33.1	27.3	20.2	16.9
FOV - along flight (°)	64.1	53.2	43.7	31.9	25.1	20.6	15.2	12.7
Aperture Range	f/5.6 - 22				f/6.3 - 22			
Exposure principle	Leaf shutter							
Shutter speed (sec)	1/2500				1/2000	1/2500	1/2000	
Capture rate (fps)	2.0							
Light Sensitivity (ISO)	50-6400							
Dynamic Range (dB)	83							
NIR Range (nm)	720 - 1000				N/A			
Events synchronization speed (µsec)	100							

Sensor Specifications

Sensor type	CMOS							
Sensor number	2				1			
Pixel size (µm)	3.76							
Array (pixel)	14204 x 10652							
Analog-to-digital- conversion (bit)	14							



	iXM-RS150F 4-Band	iXM-RS150F
Flight Specifications		
Maximal ground speed for 5cm GSD with motion blur under 1 pixel (knot)	240	
Maximal forward overlap for 5cm GSD at 150 knot (%)	93	
Maximal orthophoto angle for 20% side overlap (°)	27 for 90mm focal lens	
Flight altitude for 5cm GSD (Feet)	3926 for 90mm focal length	
Operating Conditions		
Power input (V DC)	12-30	
Maximal Power consumption (W) – camera only	32	16
Humidity - non-condensing (%)	15 to 80	
Temperature (°C)	-10 to 40	
Approvals	FCC (Class A), CE, RoHS	
System Specifications		
System weight (kg/Lb)	31 / 68.5	8.5 / 19
System size (mm/In)	460 x 430 x 440 / 18.1 x 16.9 x 17.3	(*)290 x 275 x 121 / 11.4 x 10.8 x 4.7
Pilot monitor for navigation (In)	7	
Operator monitor for camera management (In)	15	
Gyro-stabilizer SOMAG	DSM400	CSM40
GNSS/IMU Applanix	POS AVX 210 / POS AV Series	
Power consumption	6 Amp at 28V	
iX Controller MK4		
Interfaces	USB3, Power and Control Ports for Camera, GNSS and Mount	
Storage capacity (TB)	1.0	
Storage type	SSD	
Storage exchangeability	Yes	
Weight (kg/Lb)	5.11 / 2.5	
Size (mm/In)	290 x 109 x 225 / 9.8 x 3.4 x 4.11	

(*) Weight of controller not included







Technical Specifications

	IXM-RS100F 4-Band	IXM-RS100F
Frame geometry	Central projection	
Resolution	100MP 11608 x 8708	
Image formats	PhaseOne RAW IIQ-L, IIQ-S	
Output formats	Distortion Free RGB, NIR, CIR, RGBN, NVDI in TIFF 8 and 16 Bit or JPEG	Distortion Free RGB in TIFF 8 and 16 Bit or JPEG
RGB/NIR ratio	1:1	N/A
Frame width for 10 cm GSD (m)	1161	
Frame height for 10 cm GSD (m)	871	
Frame area for 10 cm GSD (sq.km)	1.01	
Typical image size (MB) for TIFF (8 Bit)	400	300

	Rodenstock / Schneider-Kreuznach							
Lenses type								
Number of lenses	2				1			
Focal length (mm)	32	40	50	70	90	110	150	180
FOV - across flight (°)	79.7	67.5	56.2	41.8	33.1	27.3	20.2	16.9
FOV - along flight (°)	64.1	53.2	43.7	31.9	25.1	20.6	15.2	12.7
Aperture Range	f/5.6 - 22				f/6.3-22			

Exposure principle	Leaf shutter				
Shutter speed (sec)	1/2500		1/2000	1/2500	1/2000
Capture rate (fps)	2				
Light Sensitivity (ISO)	50-6400				
Dynamic Range (dB)	84				
NIR Range (nm)	720 - 1000		N/A		
Events synchronization speed (µsec)	100				

Sensor Specifications

Sensor type	CMOS			
Sensor number	2		1	
Pixel size (µm)	4.60			
Array (pixel)	11608 x 8708			
Analog-to-digital-conversion (bit)	14			



	iXM-RS100F 4-Band	iXM-RS100F
Flight Specifications		
Maximal ground speed for 5cm GSD with motion blur under 1 pixel (knot)	240	
Maximal forward overlap for 5cm GSD at 150 knot (%)	91	
Maximal orthophoto angle for 20% side overlap (°)	27 for 90mm focal lens	
Flight altitude for 5cm GSD (Feet)	3209 for 90mm focal length	
Operating Conditions		
Power input (V DC)	12-30	
Maximal Power consumption (W) – camera only	32	16
Humidity - non-condensing (%)	15 to 80	
Temperature (°C)	-10 to 40	
Approvals	FCC (Class A), CE, RoHS	
System Specifications		
System weight (kg/Lb)	31 / 68.5	8.5 / 19
System size (mm/In)	460 x 430 x 440 / 18.1 x 16.9 x 17.3	(*)290 x 275 x 121 / 11.4 x 10.8 x 4.7
Pilot monitor for navigation (In)	7	
Operator monitor for camera management (In)	15	
Gyro-stabilizer SOMAG	DSM400	CSM40
GNSS/IMU Applanix	POS AVX 210/ POS AV Series	
Power consumption	6 Amp at 28V	
iX Controller MK4		
Interfaces	USB3, Power and Control Ports for Camera, GNSS and Mount	
Storage capacity (TB)	1.0	
Storage type	SSD	
Storage exchangeability	Yes	
Weight (kg/Lb)	5.2 / 11.5	
Size (mm/In)	290 x 109 x 225 / 9.8 x 3.4 x 4.11	

(*) Weight of controller not included



Aerial Solution Components

Hardware



GNSS/IMU
system

The Applanix' POS AVX 210/ POS AV series enable direct georeferencing of aerial images. By integrating precision GNSS with inertial technology, POS AV enables precise determination of position and attitude, as well as the completion of geospatial projects in a more efficient and cost effective manner. The Phase One 280MP/ 150MP/100MP Aerial Solutions are also compatible with additional GNSS/IMU systems.

Gyro Stabilized
Mounts

SOMAG DSM400 - was specifically designed for the Phase One Aerial Solutions. With a low weight of 14 kg and a high payload of 35 kg, the mount supports the reduction of the angular rate, provides optimal stabilization of the system and allows efficient and precise image capturing. This stabilizer is also used for 4-band configuration.

SOMAG CSM40 - a small modular stabilization device that was specifically designed for the Phase One 100MP/ 150MP Aerial Solutions. With a low weight of 5.2 kg and a high payload of 15 kg, the special mount system is particularly suitable with ultralight aircrafts.

iX Controller

Designed to enable rapid data transfer, the iX Controller has the ability to control up to six Phase One aerial cameras independently. Built as a workhorse, the system boasts a small footprint and easily integrates into any aircraft. The iX Controller includes robust removable protective SSD tray for convenient and secure transfer and handling.

Acting as a central hub to phase One Aerial Solutions, it controls the cameras, the gyro-stabilizing mount, the GNSS/IMU system and runs iX Capture and iX Flight software. iX Controller includes an I/O port to enable accurate activation of multiple cameras by iX Flight, pre-installed on the iX Controller.

The iX Controller supports triple monitors, one for the pilot and two for the operator so both can monitor and observe different views of the set up simultaneously.

	IIQ-L Format	IIQ-S Format
Camera	Number of images	
280 MP	3100	4600
150 MP	6000	9000
100 MP	9000	13500

Software Package



iX Capture

The iX Capture is an aerial capture, control and image processing software with an intuitive interface that displays key information such as exposure settings, histogram, GNSS/IMU data and frame count. The post processing capabilities and advanced workflow enable the fast production of distortion free RGB and CIR images, and exclusively support the processing of 280MP images.

“Provides real-time feedback and confidence of correct image capturing”



iX Flight

The iX Flight is an interactive and intuitive flight management system for precise execution of a mission, and comes uploaded to the iX Controller. Controlled and operated with ease, iX Flight enables the planning, positioning and sensors' management / triggering. During the flight, iX Flight collects log files that enable post processing, mission analysis, and post-flight reports.

With two display screens for both the pilot and the operator, each has the exact information they need for a successful aerial-image acquisition.

The Phase One Aerial Solutions are also compatible with additional Flight Management systems.

“Reduces aerial survey operational costs and increasing productivity”



iX Plan

With its intuitive GUI and multiple control functions, the iX Plan application enables users to simply generate flight plans. It enables fast import of the digital terrain model (DTM), base map, project shape, and ground control points. It also includes all Phase One sensors characteristics.

iX Plan automatically calculates flight lines and trigger points, based on sensor parameters, project parameters and mapped terrain height.

iX Plan displays the planning results used during a flight as maps and tables, which can also be used for calculating project's costs.

“From flight planning to image delivery”

Explore Our New Interactive Case Studies



- Better Efficiency
- More Productivity
- Outstanding Results
- Amazing Success Stories...



<https://casestudies.industrial.phaseone.com/>

About Phase One Industrial

Phase One Industrial, a division of Phase One A/S, researches, develops and manufactures medium and large format digital photography systems, software and imaging solutions for industrial markets. Solutions range from aerial image acquisition to machine vision applications and cultural heritage preservation. Whether mapping the globe, executing industrial inspections or preserving priceless works of art and documents, the focus is on imaging accuracy.

Phase One A/S

Roskildevej 39
DK-2000 Frederiksberg
Denmark
Tel.: +45 36 46 0111
Fax: +45 36 46 0222

Phase One USA

Rocky Mountain Metropolitan Airport
11755 Airport Way, Suite 216
Broomfield, CO 80021
USA
Tel.: +1 (303) 469-6657

Phase One Germany

Lichtstr. 43h
50825 Köln
Germany
Tel.: +49 (0)221/5402260
Fax: +49 (0)221/54022622

Phase One Japan Co., Ltd.

8F VOLT-Nagatacho
Bldg. 2-7-2 Hirakawacho,
Chiyoda-ku, Tokyo
102-0093, Japan
Tel: +81-3-6256-9681
Fax: +81-3-6256-9685

Phase One Asia

Room 1009, 10/F Eight
Commercial Tower,
8 Sun Yip Street, Siu Sai Wan
Hong Kong
Tel.: + 852 28967088
Fax: + 852 28981628



industrial.phaseone.com

PHASEONE
INDUSTRIAL