

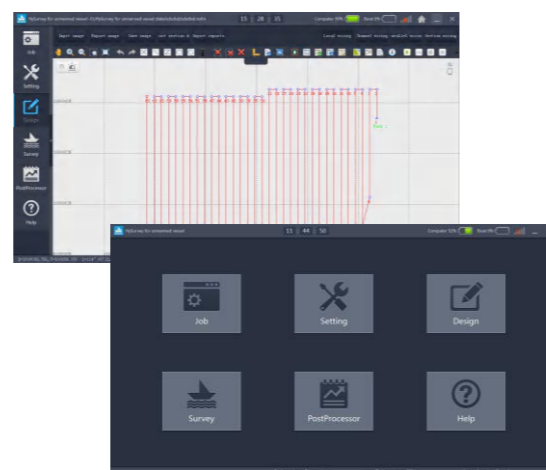
# ▶ POSEIDON SU30

## SOFTWARE

### About AUTO-PILOT

South owns the independent R&D ground control software, masters the core technology. It can support tasks planning, paths management, data collection, etc. In the case of static water, the accuracy of the sailing path can be 0.1m, and the accuracy error will not exceed 1m in the case of level 2 sea condition(Smooth-wavelet).

Equipped with South high-precision GNSS receiver and controlling system, SU30 can automatically return after completing the preset tasks, perfect match multiple operation modes and realize accurately sailing along the planned path.



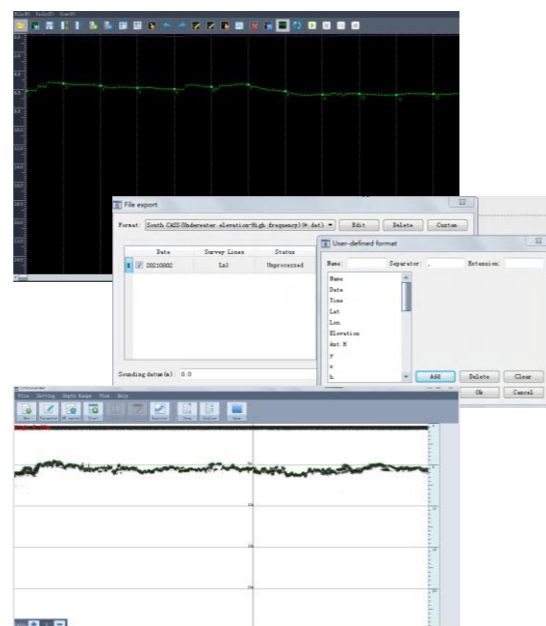
### About HYSURVEY

Hysurvey software is for single beam echo sounder survey software, support Windows system. The simple operation, stable running, professional and multi-function let Hysurvey to be the one of the most widely used hydrographic software.

SOUTH Hysurvey supports all types of GNSS receivers, supports the multiple sensor correction, like SVP, tide station and so on, Hysurvey processes all the data and exports to the coordinate of see bottom.

Hysurvey supports the output of data in custom format, which facilitates data export and enables users to perform data post-processing more quickly and conveniently.

Echo sounder software can configure the SOUTH echo sounder parameters, show the wave images, mark and export the PDF format files.



**UNMANNED SURFACE VEHICLE**  
**SMALL FRAME**  
**MARVELLOUS ENERGY**



### DUAL CULVERT-DESIGN PROPELLER

Rugged and durable, strong corrosion resistance makes it can work in sea water and waste water, waterproof IP68. Effectively prevent deposits. Easy to disassemble and assemble.



### MODULAR DESIGN

Unique moon pool design: a separate hole in the middle of the hull for easy replacement of equipment (Standard: SDE-18S Echo Sounder. Option: SDE-19S, ADCP, etc. ). And the removable propeller, camera and battery can make after-sales more convenient and efficient.



### WIDER PERSPECTIVE

The camera is in the front position with 360° rotating angle. It has twice the monitoring angle than ordinary camera, contains a larger monitoring range, more targets are presented in pictures and video at the same time, the result is more coherent and the target is clear.



### REMOTE CONTROLLER

SKYDROID M12 R/C adopts wireless communication mode, operating frequency with 2.4GHz, max transmission distance reaches to 2KM. Waterproof grade as IP65. With powerful transmission links and built-in intelligent transmission.



Poseidon SU30 USV is a new generation of high intelligent USV. The modular design brings enormous convenience for both end users and manufacturers. Small physical makes hydrographic survey go everywhere. Fields of Surveying and Mapping, Hydrogeology and Water Management can be easily covered. In addition, SU30 can be customized according to user's requirements.

## SPECIFICATIONS

| Physical                                |                                                         |
|-----------------------------------------|---------------------------------------------------------|
| Dimensions                              | 1205mm × 560mm × 440mm                                  |
| Weight (no instrument)                  | 7kg                                                     |
| Performance in wind and wave-resistance | ≤smooth-wavelet 0.1~0.5m,<br>≤windspeed 3BF, 3.4~5.4m/s |
| Material                                | High-impact GFRP                                        |
| Draught                                 | ≤15cm                                                   |
| Maximum speed                           | 6m/s                                                    |
| Communication                           |                                                         |
| Methods                                 | Network bridge 5.8G, R/C 2.4G, LTE 4G (optional)        |
| R/C Range                               | 2KM                                                     |

| Battery           |                                    |
|-------------------|------------------------------------|
| Type              | Lithium polymer                    |
| Power             | 29.4V 35Ah                         |
| Duration          | 4 hours with auto-pilot mode       |
| Waterproof        | IP68                               |
| Camera            |                                    |
| Resolution        | 1920 × 1080                        |
| Infrared Distance | ≥20m                               |
| Focus mode        | Automatic / Semiautomatic / manual |
| Digital zoom      | 16 times                           |
| Waterproof        | IP65                               |